

### Product Overview

ONPOW26 series products use the center seat sliding toggle design, fast and reliable installation. Modular combination structure, easy maintenance and flexible combination; head protection level up to IP65. Light-emitting module for integrated structure, more compact size.

**Specs** Products include buttons, knobs, key knobs, push-pull spin-release emergency stop knobs, mushroom knobs. Φ22 mounting aperture, widely used.

**Performance** The switch is made of high quality flame retardant material, with good insulation performance, low contact resistance and vibration resistance. Product safety lock conforms to IEC60947-5-5,6-2 standard. Product structure conforms to IEC60947-5-5,6.3.2 standard; emergency stop products conform to IEC60947-5-1, Annex K, IEC60947-5-5,5-2 standard.

**Structure** The switching element adopts "double-breakpoint slow-action, self-cleaning" structure, and the building block combination method. 1~8 switch elements can be combined in any way to meet the requirements of various specific control circuits. The switch adopts independent "piece" design, small volume, short length, more flexible combination; concealed The wiring terminal is more safe and reliable.

**Protective Degree** Protection class IP40, can customized to IP65



### Switch Ratings

Rated Insulation Voltage(Ui)		500V						
Terminal Current (Ith)		10A Temperature rise does not exceed the current allowed by the maximum rating						
Rated Voltage		24V	48V	110V	220V	380V	500V	
Rated Current	AC 50/60Hz	Resistive load	10A	—	10A	6A	—	
		Inductive load	10A	—	6A	3A	1.8A	1.4A
	DC	Resistive load	8A	4A	2.2A	1.1A	—	—
		Inductive load	4A	2A	1.1A	0.6A	—	—
Contact material		Silver alloy						

Minimum adaptable load: 3VAC/DC 5mA (available range depends on the use environment and load type)

### Installation Dimensions and circuit diagram

**Installation Dimensions**

**Circuit Diagram**

The switch code is 11.  
1,2 are normal closed;  
3,4 are normal opened;

Type	A	B	C	Remark
Normal, Key-lock	50	40		1. Unit: mm 2. A and B both refer to the minimum size
Selector	50	40	Φ22	
Mushroom	50	50	Φ25	
Big Mushroom	70	70	Φ30	

### Performance Characteristics

Operating temperature	-25 ~ + 55°C (no freezing) keep the air flowing around illuminated push button
Operation Humidity	45~85%RH (no condensation)
Use altitude	Installation location should not exceed 2000m above sea level
Contact Resistor	≤ 50mΩ
Insulation Resistor	≥ 100MΩ(500VDC)
Maximum withstand voltage	3000V, AC 50Hz, 1min
Vibration Resistance	50Hz, Amplitude 1.0mm
Mechanical Life	Momentary knob ≥ 1 million times
	key knob, emergency stop button ≥ 200,000 times
	Latching knob, selection knob ≥ 500,000 times
Electrical Life	≥ 50,000 times
Connection	Screw terminal, connecting ability: Min : 1×0.5mm
	Max: 2×1.5mm <sup>2</sup> (with connecting link) Max: 1×2.5mm <sup>2</sup> (without connecting link)
Operating force	8N(1NO1NC), 14N(2NO2NC)
Operation Travel	Approx. 5.5 mm (button)
Pollution Degree	3 degrees

### Lamp Ratings

LED Life	Rated Current	Voltage fluctuation	Lamp Circuit Diagram
40000 hours	24V approx. 15mA 110V approx. 2mA	DC: ±10% AC : 20%	<p>Use inner protection resistors and no positive or negative distinction.</p>

**ONPOW26 Series model description**

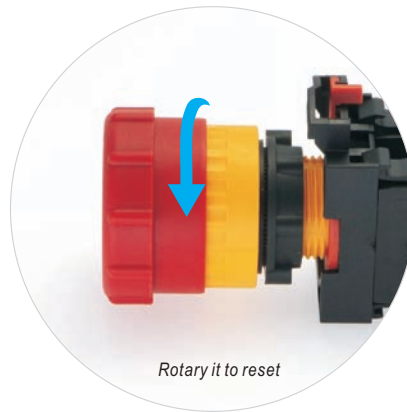
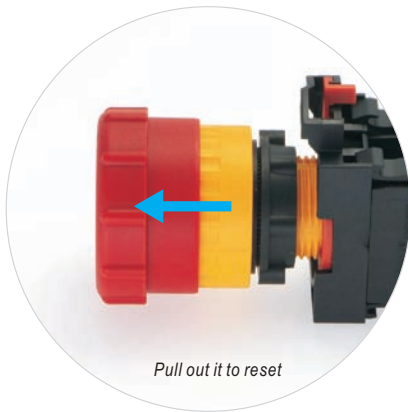
ONPOW26 ☆ ★ - ○ □ ■ / ◆ ● / ▲ / ※

Symbol	Symbol name	Specify
☆	Head type	A: A type / B: B type / C: C type / No letter means standard type
★	Connect module	K: Quick connect module / No letter means standard installation module
○	Switch block type	Q: Quick connect switch block / No letter means standard switch block
	Contact structure	11(1NO1NC) / 10(1NO) / 01(1NC) / 20(2NO) / 02(2NC)
		22(2NO2NC) / 40(4NO) / 04(4NC) / 31(3NO1NC) / 13(1NO3NC)
		30(3NO) / 03(3NC) / 21(2NO1NC) / 12(1NO2NC)
	Operation type	No letter means ordinary self-repeating button / Z: self-locking button / P: metal flat button / E: ring with light / X: knob / Y: key / M: mushroom button / MB: Mushroom button type B / TSA: Emergency stop button type A / TSB: Emergency stop button type B / TSC: Emergency stop button type C Selector button and key button
	Selector Knob and Key Knob Operation position	2: Two position / 3: Three position
	Selector Knob and Key Knob operation Type	1 maintain / 2 half return / 3 self return
	Lamp color	R: Red / G: Green / Y: Yellow / B: Blue / W: White / N: Black
	Lamp voltage	6V / 12V / 24V / 110V / 220V / Other voltage can be customized / 220VC (can be customized) AC220V capacitor step-down
	IP Degree	FP: IP67 / P: IP65 / No letter means IP40

**There are two ways to release the emergency stop button**

Press the actuator to lock, pull out or rotate it to reset.

Pull out or rotate the actuator can reset operation, so it is more safe and convenient.



**Complies with international standards Security lock structure**

Even if it is inadvertently touched, the button contact of the switch will not be disconnected, until the structure of the operation unit is locked. This feature complies with IEC60947-5-5, 6-2 standard, and can prevent emergency stop.

**Direct open circuit action function**

Even if the contact is fused, the circuit can be cut off by pressing the button hard to open the contact.

Comply with IEC60947-5-1, Enclosure K, IEC60947-5-5, 5-2)

**Safety button design**

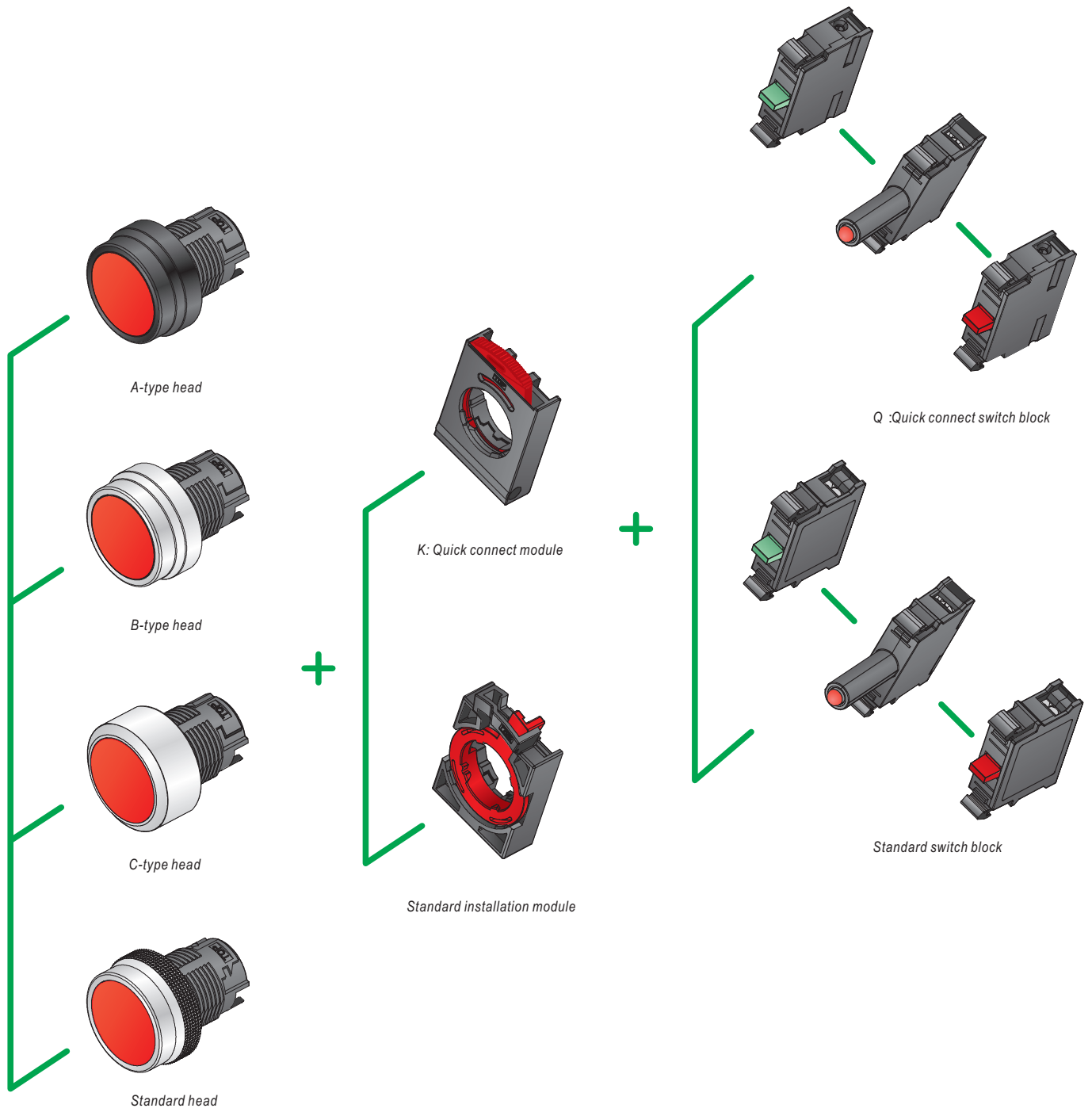
The operation head has a structure to prevent foreign matters from being sandwiched between the button and the panel.

The operation head structure is designed to prevent the button from being forcibly removed at the front of the panel.

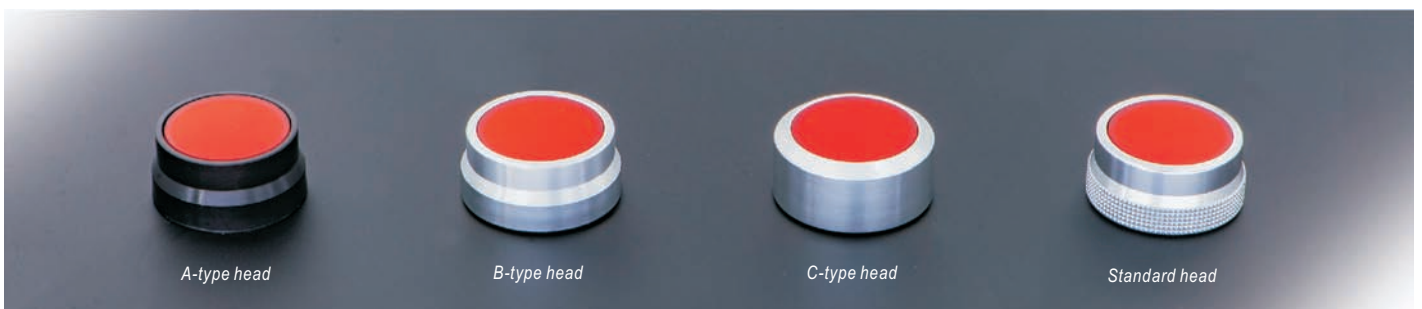
Comply with IEC60947-5-5, 6.3.2)



ONPOW26 series structure diagram



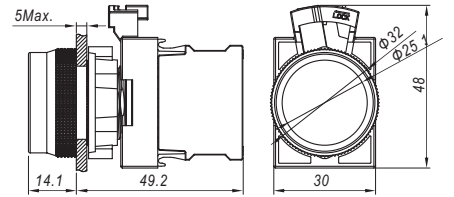
Display of different head installation effects of ONPOW26 series



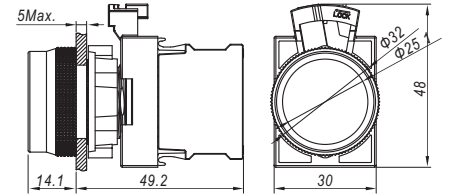
Product Picture



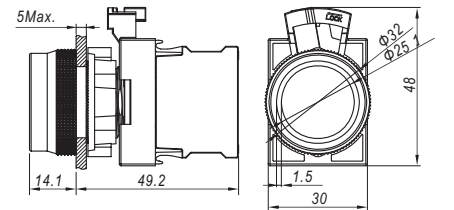
Contact 11: 1NO1NC / 10: 1NO / 01: 1NC  
Other switch combinations refer to the model description  
Operation type Z: Latching / No letter means momentary  
IP degree※ P: IP65 / No letter means IP40



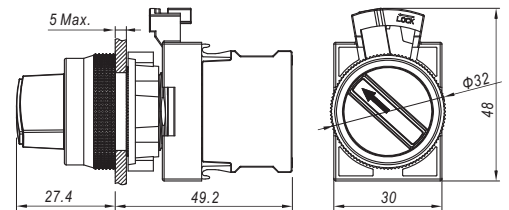
Contact 11: 1NO1NC / 10: 1NO / 01: 1NC  
Other switch combinations refer to the model description  
Operation type Z: Latching / No letter means momentary  
LED color R G Y B W N  
LED voltage 6V / 12V / 24V / 110V / 220V  
IP degree※ P: IP65 / No letter means IP40



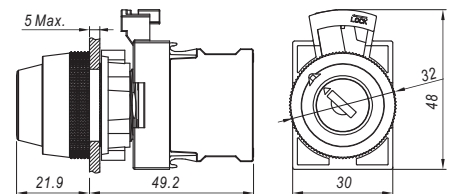
Contact 11: 1NO1NC / 10: 1NO / 01: 1NC  
Other switch combinations refer to the model description  
Operation type Z: Latching / No letter means momentary  
LED color R G Y B W N  
LED voltage 6V / 12V / 24V / 110V / 220V  
IP degree※ P: IP65 / No letter means IP40



Contact 11: 1NO1NC / 20: 2NO / 02: 2NC  
Other switch combinations refer to the model description  
Operation   
LED color R G Y B W N  
LED voltage 6V / 12V / 24V / 110V / 220V  
IP degree※ P: IP65 / No letter means IP40



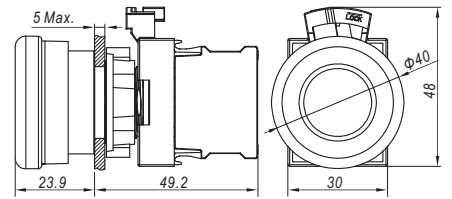
Contact 11: 1NO1NC / 20: 2NO / 02: 2NC  
Other switch combinations refer to the model description  
Operation   
IP degree※ P: IP65 / No letter means IP40



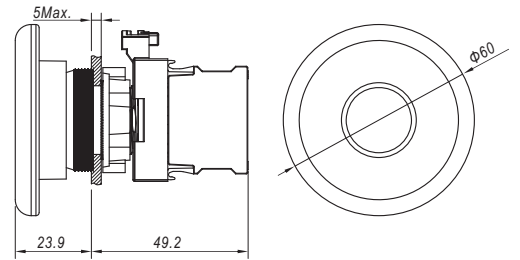
Description Dimension



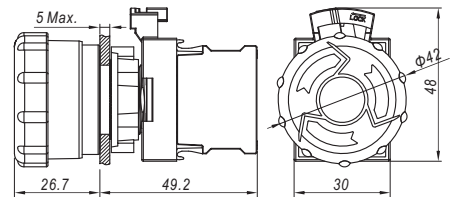
Contact 11: 1NO1NC / 10: 1NO / 01: 1NC  
Other switch combinations refer to the model description  
Operation type Z: Latching / No letter means momentary  
LED color R G  
LED voltage 6V / 12V / 24V / 110V / 220V  
IP degree※ P:IP65 / No letter means IP40



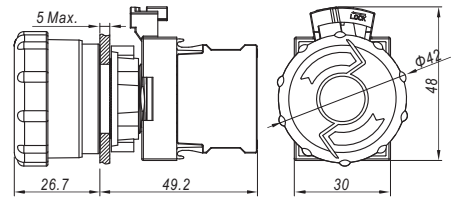
Contact 11: 1NO1NC / 10: 1NO / 01: 1NC  
Other switch combinations refer to the model description  
Operation type Z: Latching / No letter means momentary  
LED color R G  
LED voltage 6V / 12V / 24V / 110V / 220V  
IP degree※ P:IP65 / No letter means IP40



Operation Push-lock, pull/turn-reset  
Contact 11: 1NO1NC / 10: 1NO / 01: 1NC  
Other switch combinations refer to the model description  
LED voltage 6V / 12V / 24V / 110V / 220V  
IP degree※ P:IP65 / No letter means IP40  
Accessory Warning ring T14-2260 / Protective ring T26



Operation Push-lock, pull/turn-reset  
Contact 11: 1NO1NC / 10: 1NO / 01: 1NC  
Other switch combinations refer to the model description  
LED voltage 6V / 12V / 24V / 110V / 220V  
IP degree※ P:IP65 / No letter means IP40  
Accessory Warning ring T14-2260 / Protective ring T26



Operation Push-lock, pull/turn-reset  
Contact 11: 1NO1NC / 10: 1NO / 01: 1NC  
Other switch combinations refer to the model description  
LED voltage 6V / 12V / 24V / 110V / 220V  
IP degree※ P:IP65 / No letter means IP40  
Accessory Warning ring T14-2260

