

ONPOW62 Series

- Mounting hole diameter: $\Phi 19, \Phi 22$
- Switch characteristics: slow-action / single-throw
- Product features: Thickened silver contacts, larger silver-plated pins.
Switch rating up to 20A/220VAC.
- Protection grade: IP40/IP67.



ONPOW62 Series model description

ONPOW62☆-□■◇/◆/△/▲/○/※

| Symbol | Symbol name | Specify |
|--------|------------------------|---|
| ☆ | Panel cutout dimension | 19: $\Phi 19\text{mm}$ / $\Phi 22\text{mm}$ |
| | Contact structure | 10: 1NO |
| | Operation type | Z: Latching / No letter means Momentary |
| ◇ | Lamp type | E: ○ Ring / ET: Ⓜ Ring+ power sign / No letter means without lamp |
| ◆ | Connect type | J: Pin terminal |
| | Lamp color | R: Red / G: Green / Y: Yellow / B: Blue / W: White |
| | Lamp voltage | 6V / 12~24V/ 110V, 220V external resistance required |
| | Shell material | S: stainless steel |
| | IP Degree | No letter means IP40 / FP: IP67 |

Note: please carefully read the specific description of the product and select the corresponding code in the table according to different symbols.

Performance Characteristic

| | |
|---------------------------|---|
| Operating temperature | -25 ~ + 55 (no freezing) keep the air flowing around illuminated push button |
| Operation Humidity | 45~85%RH (no condensation) |
| Contact Resistor | 50m Ω |
| Insulation Resistor | 100M Ω (500VDC) |
| Maximum withstand voltage | 1500V, 50Hz AC, 1min |
| Solder Heat Resistance | 320 , 3 seconds |
| Switch rating | AC-15: 5A 220VAC AC-12: 20A/220VAC |
| Mechanical Life | 1000K cycles |
| Electrical Life | 50K cycles |
| Base material | PA |
| Nut torque | about 0.6Nm |
| Operation Pressure | around 6N |
| Operation Travel | around 3.5mm |
| Protecting level | IP65(IP67 can be made), IK07 |

Switching Operation

| Type | Diagram | Sign |
|------|---------|------|
| X | | |

Note: Using two terminals for double-break point slow-acting contact switches

Lamp ratings

| LED Life | Rated Current | Voltage fluctuation | Lamp Circuit Diagram |
|------------|---------------|---------------------------|--|
| 40000hours | 15mA | DC: $\pm 10\%$ AC: 20% | 24V, Use inner protection resistors and no positive or negative distinction. |

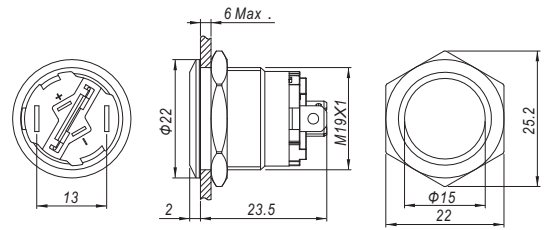
Terminal Description

| | |
|--|--|
| | +/- are lamp terminals, the standard LED, have no difference of anode and cathode, lamp and switch are relatively independent and can use switch or peripheral circuit to control the lamp state |
|--|--|



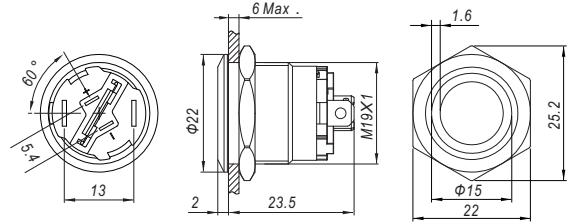
ONPOW6219F-10 ■/J/S/※

Contact structure 1NO
 Operation type Z: Latching / No letter means momentary
 Shell material Stainless steel
 Tail configuration Terminal pins(4.8*0.8mm)
 IP degree No letter means IP40 / FP: IP67
 Applicable accessory M12-19F Sealing cover / T21-19 Protective cover



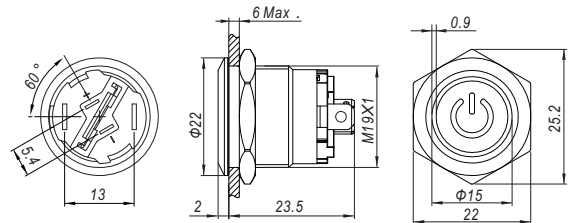
ONPOW6219F-10 ■E/J/△/▲/S/※

Contact structure 1NO
 Operation type Z: Latching / No letter means momentary
 Lamp color R G Y B W
 Lamp voltage ▲ 6V/12V-24V/110V/220V
 Shell material Stainless steel
 Tail configuration Terminal pins(4.8*0.8mm)
 LED pins(2.8*0.8mm)
 IP degree No letter means IP40 / FP: IP67
 Applicable accessory M12-19F Sealing cover / T21-19 Protective cover



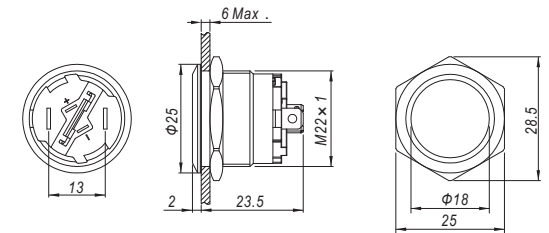
ONPOW6219F-10 ■E/T/J/△/▲/S/※

Contact structure 1NO
 Operation type Z: Latching / No letter means momentary
 Lamp color R G Y B W
 Lamp voltage ▲ 6V/12V-24V/110V/220V
 Shell material Stainless steel
 Tail configuration Terminal pins(4.8*0.8mm)
 LED pins(2.8*0.8mm)
 IP degree No letter means IP40 / FP: IP67
 Applicable accessory M12-19F Sealing cover / T21-19 Protective cover



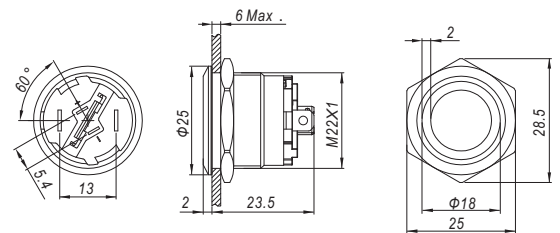
ONPOW6222F-10 ■/J/S/※

Contact structure 1NO
 Operation type Z: Latching / No letter means momentary
 Shell material Stainless steel
 Tail configuration Terminal pins(4.8*0.8mm)
 IP degree No letter means IP40 / FP: IP67
 Applicable accessory M12-22F Sealing cover / T21-22 Protective cover



ONPOW6222F-10 ■E/J/△/▲/S/※

Contact structure 1NO
 Operation type Z: Latching / No letter means momentary
 Lamp color R G Y B W
 Lamp voltage ▲ 6V/12V-24V/110V/220V
 Shell material Stainless steel
 Tail configuration Terminal pins(4.8*0.8mm)
 LED pins(2.8*0.8mm)
 IP degree No letter means IP40 / FP: IP67
 Applicable accessory M12-22F Sealing cover / T21-22 Protective cover



ONPOW6222F-10 ■E/T/J/△/▲/S/※

Contact structure 1NO
 Operation type Z: Latching / No letter means momentary
 Lamp color R G Y B W
 Lamp voltage ▲ 6V/12V-24V/110V/220V
 Shell material Stainless steel
 Tail configuration Terminal pins(4.8*0.8mm)
 LED pins(2.8*0.8mm)
 IP degree No letter means IP40 / FP: IP67
 Applicable accessory M12-22F Sealing cover / T21-22 Protective cover

