


Short body latching button
ONPOW63 Series

- Mounting hole diameter: $\Phi 12$
- Switch characteristics: slow-action / single-throw
- Product features: Product features: innovative 12mm "short body self-locking" structure. Suitable for all kinds of scenes; more comfortable high flat keys, in line with the use of habits
- Protection grade: IP65/IP67.



ONPOW63 Series model description

ONPOW63 ☆ ★ - □ ◇ / J / △ / ▲ / ○ / ※

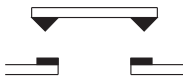

Symbol	Symbol name	Specify
☆	Panel cutout dimension	12: $\Phi 12\text{mm}$ / $\Phi 8, 10, 16, 19, 22, 25\text{mm}$ is under development
★	Front shape	H: High Round / F: Flat Round / B: Spherical
□	Contact structure	10: 1NO / No letter means indicator
■	Operation type	Z: Latching / No letter means Momentary
◇	Lamp type	E:  Ring / No letter means without lamp
◆	Connect type	J: Pin terminal
△	Lamp color	R: Red / G: Green / Y: Yellow / B: Blue / W: White
▲	Lamp voltage	6V / 12V ~24V with internal resistor, Other voltage levels can be customized and need to connect external resistors
○	Shell material	S: stainless steel / A: Aluminium alloy(black)
※	IP Degree	No letter means IP65 / FP: IP67

Note: please carefully read the specific description of the product and select the corresponding code in the table according to different symbols.


Performance Characteristic

Operating temperature	-25 ~ + 55°C (no freezing) keep the air flowing around illuminated push button
Operation Humidity	45~85%RH (no condensation)
Contact Resistor	$\leq 50\text{m}\Omega$
Insulation Resistor	$\geq 100\text{M}\Omega(500\text{VDC})$
Maximum withstand voltage	1500V, 50Hz AC, 1min
Vibration Resistance	50Hz, Amplitude 1.2mm
Solder-resistant heat	320°C 3s
Switch rating	2A/36VDC
Mechanical Life	$\geq 1000\text{K}$ cycles
Electrical Life	$\geq 50\text{K}$ cycles
Base material	PA
Nut torque	about 0.3Nm
Operation Pressure	around 2.5N
Operation Travel	around 2.4mm
Protecting level	IP65(IP67 can be made), IK07

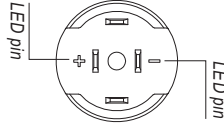
Switching Operation

Type	Diagram	Sign
X		

Lamp ratings

LED Life	Rated Current	Voltage fluctuation	Lamp Circuit Diagram
≥ 40000 hours	$\leq 15\text{mA}$	DC: 10% AC: 20%	 $\leq 24\text{V}$, Use inner protection resistors and no positive or negative distinction.

Terminal Description

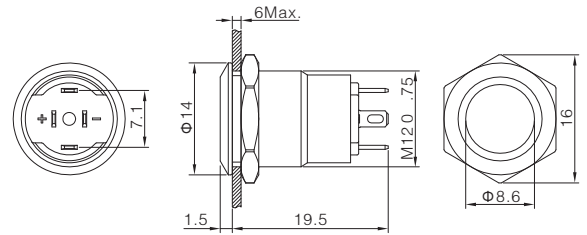


+/- are lamp terminals, the standard LED, have no difference of anode and cathode, lamp and switch are relatively independent and can use switch or peripheral circuit to control the lamp state

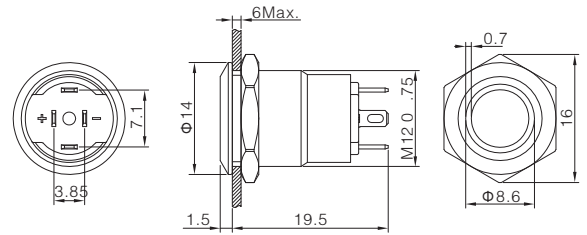
Product Picture Description Dimension



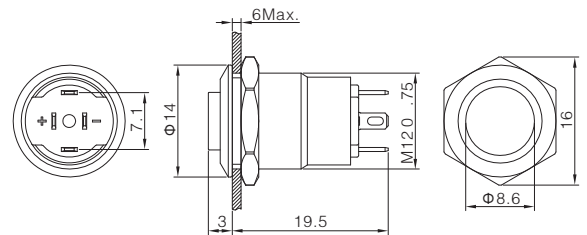
Contact structure 1NO
 Operation type ■ Z: Latching / No letter means momentary
 Shell material Stainless steel
 Tail configuration Terminal pins(2*0.5mm)
 IP degree※ No letter means IP65 / FP: IP67
 Applicable accessory M12-12F



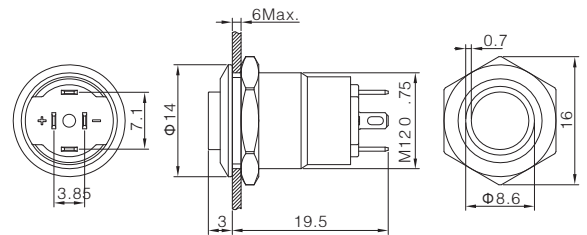
Contact structure 1NO
 Operation type ■ Z: Latching / No letter means momentary
 LED color Δ R G Y B W
 LED voltage ▲ 6V / 12V ~ 24V
 Shell material Stainless steel
 Tail configuration Terminal pins(2*0.5mm)
 IP degree※ No letter means IP65 / FP: IP67
 Applicable accessory M12-12F



Contact structure 1NO
 Operation type ■ Z: Latching / No letter means momentary
 Shell material Stainless steel
 Tail configuration Terminal pins(2*0.5mm)
 IP degree※ No letter means IP65 / FP: IP67



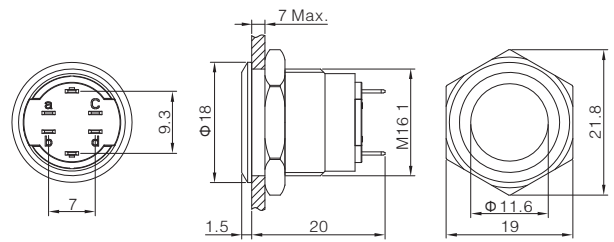
Contact structure 1NO
 Operation type ■ Z: Latching / No letter means momentary
 LED color Δ R G Y B W
 LED voltage ▲ 6V / 12V ~ 24V
 Shell material Stainless steel
 Tail configuration Terminal pins(2*0.5mm)
 IP degree※ No letter means IP65 / FP: IP67





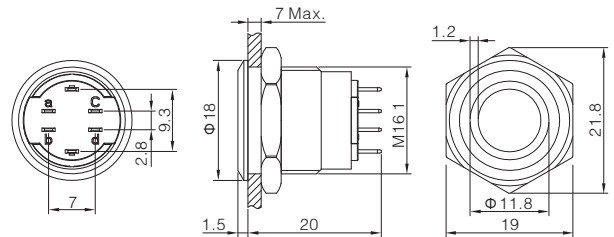
Flat Round
ONPOW6316F-10 ■/J/S/※

Contact structure 1NO
 Operation type ■ Z: Latching / No letter means momentary
 Shell material Stainless steel
 Tail configuration Terminal pins(2*0.5mm)
 IP degree※ No letter means IP65 / FP: IP67
 Applicable accessory M12-16F



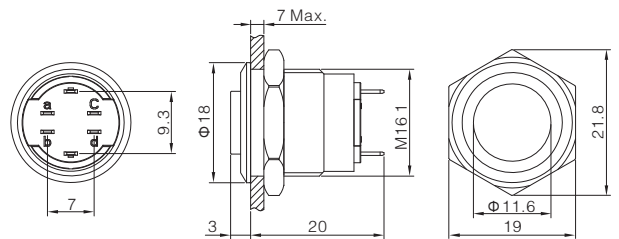
Ring-illuminated
ONPOW6316F-10 ■/E/J/△/▲/S/※

Contact structure 1NO
 Operation type ■ Z: Latching / No letter means momentary
 LED color △ R G Y B W
 LED voltage ▲ 6V / 12V~24V
 Shell material Stainless steel
 Tail configuration Terminal pins(2*0.5mm)
 IP degree※ No letter means IP65 / FP: IP67
 Applicable accessory M12-16F



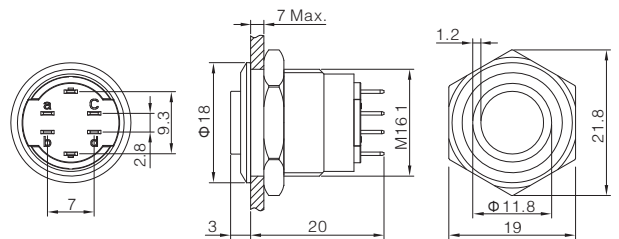
High Round
ONPOW6316H-10 ■/J/S/※

Contact structure 1NO
 Operation type ■ Z: Latching / No letter means momentary
 Shell material Stainless steel
 Tail configuration Terminal pins(2*0.5mm)
 IP degree※ No letter means IP65 / FP: IP67
 Applicable accessory M12-16H



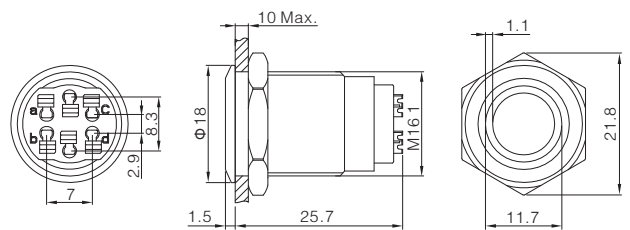
High Head Ring-illuminated
ONPOW6316H-10 ■/E/J/△/▲/S/※

Contact structure 1NO
 Operation type ■ Z: Latching / No letter means momentary
 LED color △ R G Y B W
 LED voltage ▲ 6V / 12V~24V
 Shell material Stainless steel
 Tail configuration Terminal pins(2*0.5mm)
 IP degree※ No letter means IP65 / FP: IP67
 Applicable accessory M12-16H



Ring-illuminated
ONPOW6316F-10 ■/J/S/※

Contact structure 1NO
 Operation type ■ Z: Latching / No letter means momentary
 LED color △ R G Y B W
 LED voltage ▲ 6V / 12V~24V
 Shell material Stainless steel
 Tail configuration Quick-connect type socket
 IP degree※ No letter means IP65 / FP: IP67
 Applicable accessory M12-16F



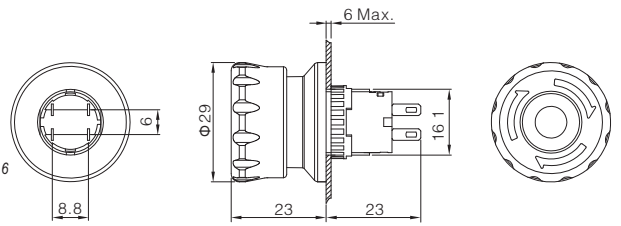
16mm Sealing cover
M12-16F



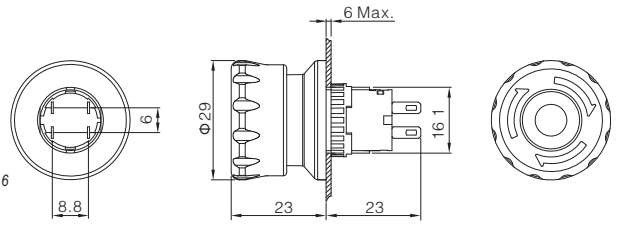
16mm Sealing cover
M12-16H



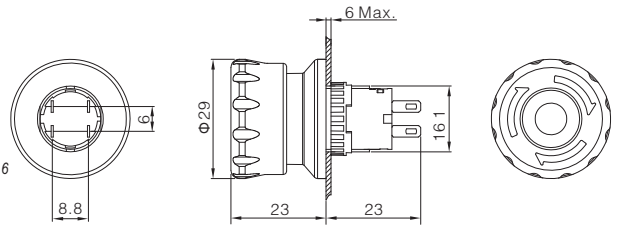
Contact structure 1NC/2NC/1NO1NC
 Shell material PA
 Tail configuration Terminal pins(2*0.5mm)
 IP degree※ No letter means IP65
 Applicable accessory Warning Ring S10-1650/Protective cover T34-16



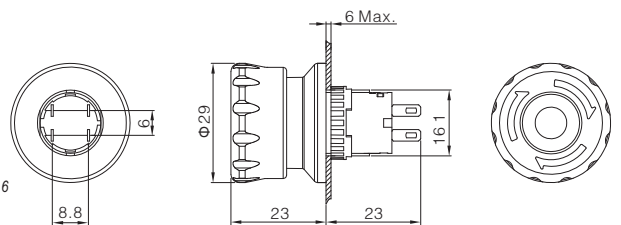
contact structure 1NC
 LED color △ R G Y B W
 Shell material PA
 Tail configuration Terminal pins(2*0.5mm)
 IP degree※ No letter means IP65
 Applicable accessory Warning Ring S10-1650/Protective cover T34-16



Contact structure 1NC/2NC/1NO1NC
 Shell material PA
 Tail configuration Terminal pins(2*0.5mm)
 IP degree※ No letter means IP65
 Applicable accessory Warning Ring S10-1650/Protective cover T34-16



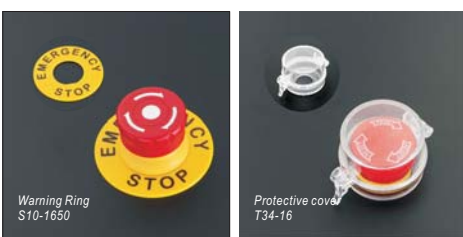
Contact structure 1NC
 LED color △ R G Y B W
 Shell material PA
 Tail configuration Terminal pins(2*0.5mm)
 IP degree※ No letter means IP65
 Applicable accessory Warning Ring S10-1650/Protective cover T34-16



Emergency Stop Pin Description



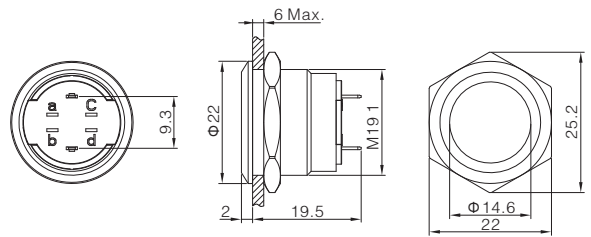
Emergency stop button defaults to a set of NC switches,
 the other two pins can be selected NC, NO, LED,
 Due to structural reasons, it is not recommended to leave it blank





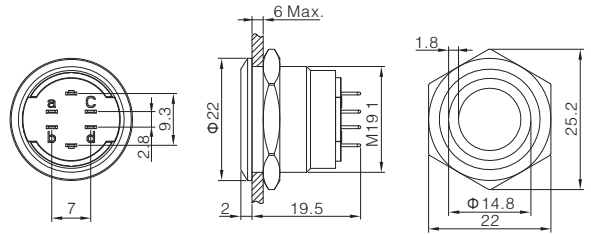
Flat Round
ONPOW6319F-10 ■ / J / S / ※

Contact structure 1NO
 Operation type ■ Z: Latching / No letter means momentary
 Shell material Stainless steel
 Tail configuration Terminal pins (2*0.5mm)
 IP degree ※ No letter means IP65 / FP: IP67
 Applicable accessory M12-19F



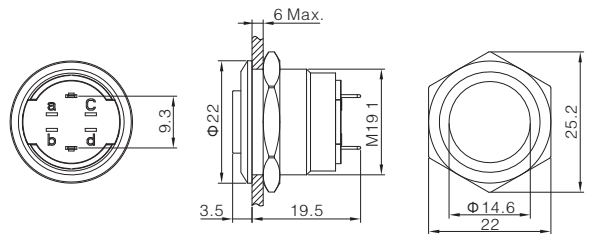
Ring-illuminated
ONPOW6319F-10 ■ E / J / Δ / ▲ / S / ※

Contact structure 1NO
 Operation type ■ Z: Latching / No letter means momentary
 LED color Δ R G Y B W
 LED voltage ▲ 6V / 12V-24V
 Shell material Stainless steel
 Tail configuration Terminal pins (2*0.5mm)
 IP degree ※ No letter means IP65 / FP: IP67
 Applicable accessory M12-19F



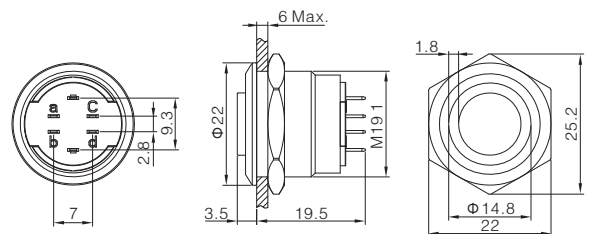
High Round
ONPOW6319H-10 ■ / J / S / ※

Contact structure 1NO
 Operation type ■ Z: Latching / No letter means momentary
 Shell material Stainless steel
 Tail configuration Terminal pins (2*0.5mm)
 IP degree ※ No letter means IP65 / FP: IP67
 Applicable accessory M12-19H



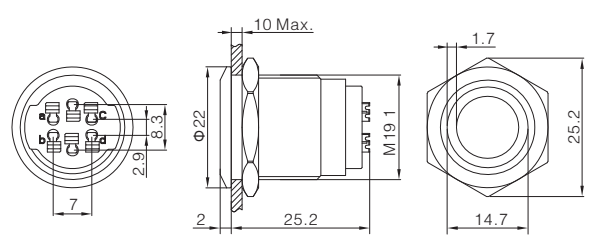
High Head Ring-illuminated
ONPOW6319H-10 ■ E / J / Δ / ▲ / S / ※

Contact structure 1NO
 Operation type ■ Z: Latching / No letter means momentary
 LED color Δ R G Y B W
 LED voltage ▲ 6V / 12V-24V
 Shell material Stainless steel
 Tail configuration Terminal pins (2*0.5mm)
 IP degree ※ No letter means IP65 / FP: IP67
 Applicable accessory M12-19H



Ring-illuminated
ONPOW6319F-10 ■ E / J / Δ / ▲ / S / ※

Contact structure 1NO
 Operation type ■ Z: Latching / No letter means momentary
 LED color Δ R G Y B W
 LED voltage ▲ 6V / 12V-24V
 Shell material Stainless steel
 Tail configuration Quick-connect type socket
 IP degree ※ No letter means IP65 / FP: IP67
 Applicable accessory M12-19F



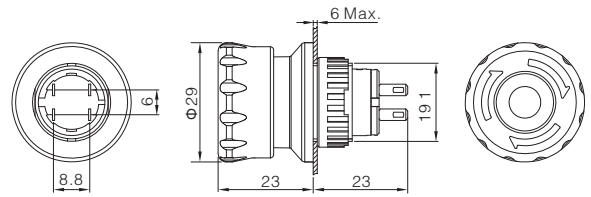
19mm Sealing cover
M12-19F

19mm Sealing cover
M12-19H



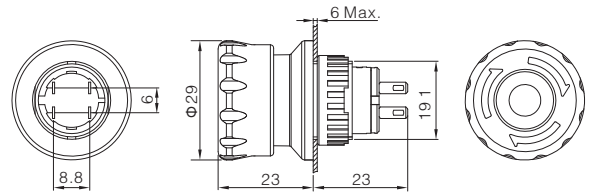
Emergency stop (plastic shell)
ONPOW6319-□TS/J/PA/※

Contact structure 1NC/2NC/1NO1NC
Shell material PA
Tail configuration Terminal pins(2*0.5mm)
IP degree※ No letter means IP65
Applicable accessory Warning Ring S10-1950/Protective cover T34-19



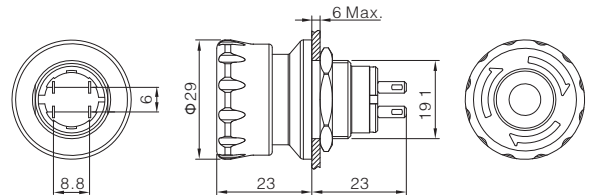
Emergency stop (plastic shell)
ONPOW6319-01TS/J/PA/※

Contact structure 1NC
LED color Δ R G Y B W
Shell material PA
Tail configuration Terminal pins(2*0.5mm)
IP degree※ No letter means IP65
Applicable accessory Warning Ring S10-1950/Protective cover T34-19



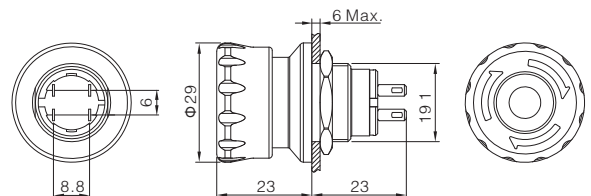
Emergency stop (Aluminium alloy shell)
ONPOW6319-□TS/J/※

Contact structure 1NC/2NC/1NO1NC
Shell material PA
Tail configuration Terminal pins(2*0.5mm)
IP degree※ No letter means IP65
Applicable accessory Warning Ring S10-1950/Protective cover T34-19



Emergency stop (Aluminium alloy shell)
ONPOW6319-01TS/J/※

Contact structure 1NC
LED color Δ R G Y B W
Shell material PA
Tail configuration Terminal pins(2*0.5mm)
IP degree※ No letter means IP65
Applicable accessory Warning Ring S10-1950/Protective cover T34-19



Emergency Stop Pin Description



NC NO LED choose one of three

Emergency stop button defaults to a set of NC switches,
the other two pins can be selected NC, NO, LED,
Due to structural reasons, it is not recommended to leave it blank



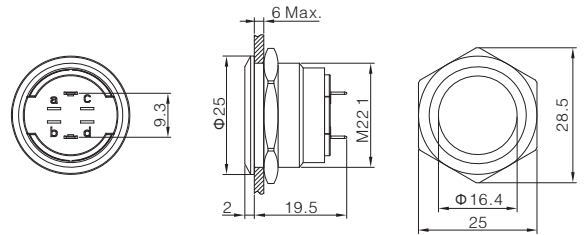
Warning Ring
S10-1950



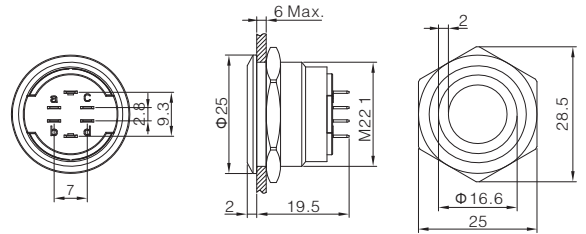
Protective cover
M34-19



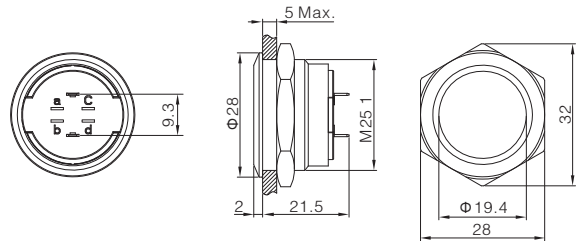
Contact structure 1NO
 Operation type ■ Z: Latching / No letter means momentary
 Shell material Stainless steel
 Tail configuration Terminal pins(2*0.5mm)
 IP degree ※ No letter means IP65 / FP: IP67
 Applicable accessory M12-22F



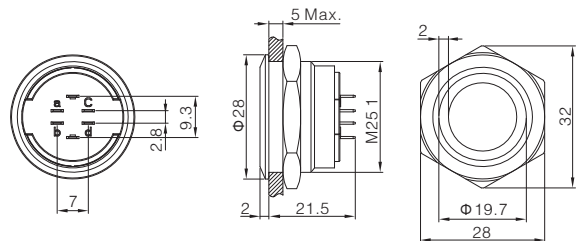
Contact structure 1NO
 Operation type ■ Z: Latching / No letter means momentary
 LED color Δ R G Y B W
 LED voltage ▲ 6V / 12V-24V
 Shell material Stainless steel
 Tail configuration Terminal pins(2*0.5mm)
 IP degree ※ No letter means IP65 / FP: IP67
 Applicable accessory M12-22F



Contact structure 1NO
 Operation type ■ Z: Latching / No letter means momentary
 Shell material Stainless steel
 Tail configuration Terminal pins(2*0.5mm)
 IP degree ※ No letter means IP65 / FP: IP67
 Applicable accessory M12-25F



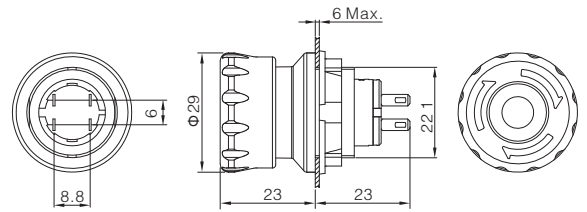
Contact structure 1NO
 Operation type ■ Z: Latching / No letter means momentary
 LED color Δ R G Y B W
 LED voltage ▲ 6V / 12V-24V
 Shell material Stainless steel
 Tail configuration Terminal pins(2*0.5mm)
 IP degree ※ No letter means IP65 / FP: IP67
 Applicable accessory M12-25F





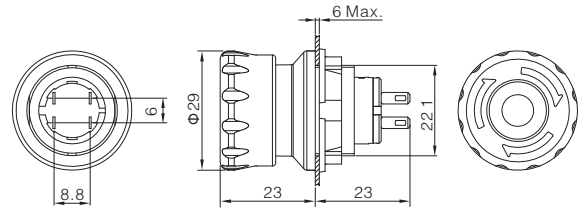
Emergency stop (plastic shell)
ONPOW6322-□TS/J/PA/※

Contact structure 1NC/2NC/1NO1NC
Shell material PA
Tail configuration Terminal pins(2*0.5mm)
IP degree※ No letter means IP65
Applicable accessory Warning Ring S10-2250/Protective cover T16



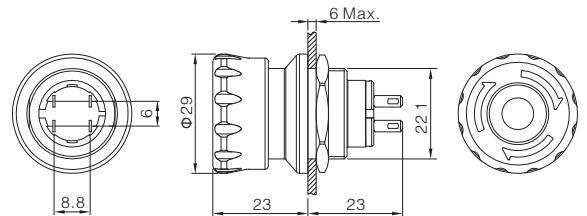
Emergency stop (plastic shell)
ONPOW6322-01TS/J/PA/※

Contact structure 1NC
LED color △ R G Y B W
Shell material PA
Tail configuration Terminal pins(2*0.5mm)
IP degree※ No letter means IP65
Applicable accessory Warning Ring S10-2250/Protective cover T16



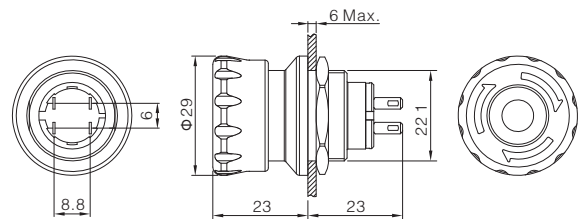
Emergency stop (Aluminium alloy shell)
ONPOW6322-□TS/J/※

Contact structure 1NC/2NC/1NO1NC
Shell material PA
Tail configuration Terminal pins(2*0.5mm)
IP degree※ No letter means IP65
Applicable accessory Warning Ring S10-2250/Protective cover T16



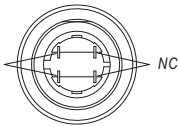
Emergency stop (Aluminium alloy shell)
ONPOW6322-01TS/J/※

Contact structure 1NC
LED color △ R G Y B W
Shell material PA
Tail configuration Terminal pins(2*0.5mm)
IP degree※ No letter means IP65
Applicable accessory Warning Ring S10-2250/Protective cover T16

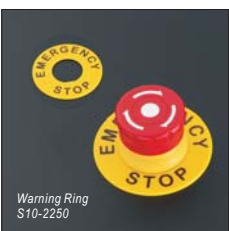


Emergency Stop Pin Description

NC NO LED choose one of three



Emergency stop button defaults to a set of NC switches,
the other two pins can be selected NC, NO, LED,
Due to structural reasons, it is not recommended to leave it blank



Warning Ring
S10-2250



Protective cover
T16