

GQ系列信号指示灯

GQ series signal indicator lights

- 安装尺寸: $\Phi 6/8/10/12/14/16/19/22/25\text{mm}$
Installation size
- 壳体材质: 黄铜镀镍 / 黄铜镀黑 / 不锈钢
Shell material: Nickel plated brass / Black plated brass / Stainless steel
- 接线方式: 15cm引线 / 接线柱 / 插脚式
Wiring method: 15cm lead / terminal post / pin type
- 防水等级: IP67
Waterproof grade: IP67
- 产品认证: CE
Certification
- 多色灯可定制 RGB
Multi color lights can be customized



GQ系列抗破坏防水金属信号灯型号说明 GQ Series Anti Destructive and Waterproof Metal Signal Light Model Description

GQ★■-□/◆/△/▲/◎

对应符号 Symbol	符号名称 Symbol Name	具体说明 Specific Explanation
★	安装孔尺寸 Installation hole size	6: $\Phi 6\text{mm}$ / 8: $\Phi 8\text{mm}$ / 10: $\Phi 10\text{mm}$ / 12: $\Phi 12\text{mm}$ / 14: $\Phi 14\text{mm}$ / 16: $\Phi 16\text{mm}$ / 19: $\Phi 19\text{mm}$ / 22: $\Phi 22\text{mm}$ / 25: $\Phi 25\text{mm}$
■	头部形状 Head shape	G: 球形 / T: 平圆形1 / F: 平圆形2 G: Spherical / T: Flat Circle 1 / F: Flat Circle 2
□	带灯类型 Lamp type	D: 信号灯 / SD: 频闪灯(需定制) D: Signal light / SD: strobe light (customized)
◆	接线类型 Wiring type	L: 接线柱 / Y: 引线 / 无字母表示接线插片 L: Terminal post / Y: lead wire / no letter indicating terminal plug
△	带灯颜色 Color with light	R: 红 / G: 绿 / Y: 黄 / B: 蓝 / W: 白 R: Red / G: Green / Y: Yellow / B: Blue / W: White
▲	带灯电压 Lamp voltage	见产品参数(频闪灯电压: 6~24V) See product parameters (strobe light voltage: 6~24V)
◎	壳体材料 Shell Material	N: 黄铜镀镍外壳 / S: 不锈钢外壳 / A: 黄铜镀黑外壳 N: Brass nickel plated shell / S: stainless steel shell / A: brass black plated shell

注: 请仔细阅读产品具体说明后, 根据不同符号在该表中选取相应代号, 其中三色灯型号见详情页。

Note: Please carefully read the specific product instructions and select the corresponding code in this table based on different symbols. The three color lamp model can be found on the details page.

性能特征 Performance characteristics

工作环境温度 Ambient Temperature	-25°C~+55°C(无冰冻), 开关本体周围必须空气流通 -25°C~+55°C(No freezing), air circulation must be maintained around the switch body
工作环境湿度 Environment Humidity	45~85%RH(无结露) 45~85%RH(No condensation)
灯珠寿命 Lamp bead lifespan	40000小时以上 Over 40000 hours
绝缘电阻 Insulation resistance	$\geq 100\text{M}\Omega$ (500VDC)
耐振动性 Vibration resistance	5~50赫兹, 振幅约1.2mm 5~50Hz, amplitude about 1.2mm
耐压 Withstanding Voltage	3000VAC, 50Hz, 1 min
耐焊锡热 Resistance to soldering heat	320°C 3s
频闪灯电气参数 Electrical parameters of strobe lights	Ue: 6~24V Ie: 20mA 闪光频率: 160次/分钟(其他频率可定制) Flash frequency: 160 times/minute (other frequencies can be customized)

灯珠规格 Base specifications

灯珠类型 LED type	单色灯: 双向LED灯珠 三色灯: 单向三色LED灯珠 Monochrome lamp: Bidirectional LED beads Tri color lamp: Unidirectional tri color LED beads
发光颜色 Luminous color	
灯珠寿命 LED life	40000小时(参考值) 40000 hours (reference value)
额定电压 Rated voltage	不带电阻: 1.8V, 2.8V Without resistance: 内置电阻: 参考相关参数页 Built in resistor: refer to the relevant parameter page
额定电流 Rated current	约6mA About 6mA
等效电路 Equivalent circuit	<div style="display: flex; justify-content: space-around;"> <div style="text-align: center;"> <p>单色灯: Monochrome lamp:</p> </div> <div style="text-align: center;"> <p>三色灯: Tri color lamp:</p> </div> </div>



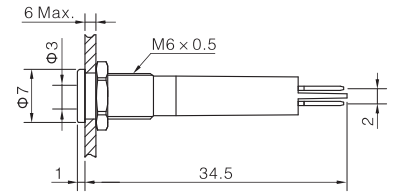
GQ6T-D/Δ/▲/N



GQ6T-D/Δ/▲/S



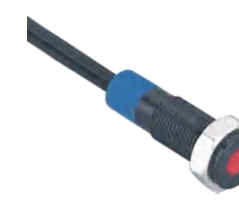
GQ6T-D/Δ/▲/A



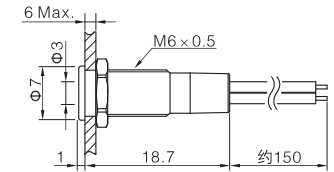
GQ6T-D/Y/Δ/▲/N



GQ6T-D/Y/Δ/▲/S



GQ6T-D/Y/Δ/▲/A



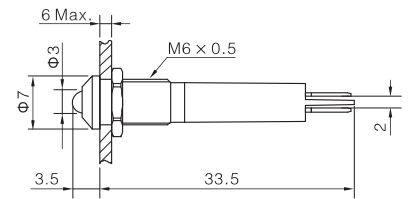
GQ6G-D/Δ/▲/N



GQ6G-D/Δ/▲/S



GQ6G-D/Δ/▲/A



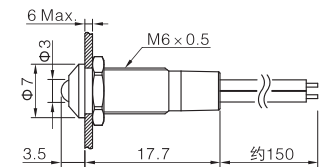
GQ6G-D/Y/Δ/▲/N



GQ6G-D/Y/Δ/▲/S



GQ6G-D/Y/Δ/▲/A



- ◎ 灯珠颜色 (Δ) : **R G Y B W**
- ◎ 电压等级 (▲) : 6V, 12V, 24V, 110V(外接电阻), 220V(外接电阻)

- ◎ 安装孔尺寸: Φ6mm
- ◎ 灯珠类型: 双向LED灯珠(交直流通用)
- ◎ 额定电流: 2mA~20mA
- ◎ 螺母扭矩: 约0.1N·m
- ◎ 面板厚度: 不大于6mm
- ◎ 尾部配置: 接线插片(2×0.5mm)/长约15cm导线
- ◎ 耐焊锡热: 320℃ 3秒

- ◎ 外壳材料: 黄铜镀镍/黄铜镀黑/不锈钢
- ◎ 灯罩材料: 环氧树脂(可定制抗紫外线)
- ◎ 底座材料: PA
- ◎ 防护等级: IP67, IK06(仅平圆形)
- ◎ **RoHS** 可定制

- ◎ Lamp bead color (Δ) : **R G Y B W**
- ◎ Voltage level (▲) : 6V, 12V, 24V, 110V (external resistor), 220V (external resistor)

- ◎ Installation hole size: Φ6mm
- ◎ Lamp bead type: Bidirectional LED lamp bead (AC/DC universal)
- ◎ Rated current: 2mA~20mA
- ◎ Nut torque: approximately 0.1N·m
- ◎ Panel thickness: not exceeding 6mm
- ◎ Tail configuration: Wiring plug (2 × 0.5mm) / approximately 15cm long wire
- ◎ Solder heat resistance: 320 °C for 3 seconds

- ◎ Shell material: Nickel plated brass / Black plated brass / Stainless steel
- ◎ Lampshade material: Epoxy resin (customizable UV resistant)
- ◎ Base material: PA
- ◎ Protection level: IP67, IK06 (flat circular only)
- ◎ **RoHS** customizable

GQ6信号灯相关参数

GQ6 signal light related parameters



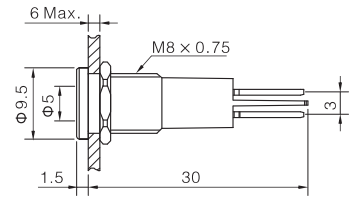
GQ8T-D/Δ/▲/N



GQ8T-D/Δ/▲/S



GQ8T-D/Δ/▲/A



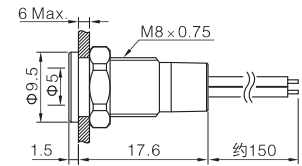
GQ8T-D/Y/Δ/▲/N



GQ8T-D/Y/Δ/▲/S



GQ8T-D/Y/Δ/▲/A



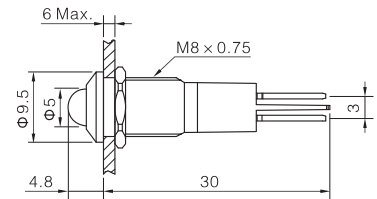
GQ8G-D/Δ/▲/N



GQ8G-D/Δ/▲/S



GQ8G-D/Δ/▲/A



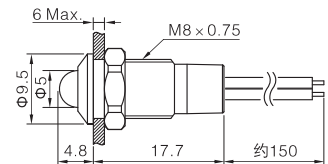
GQ8G-D/Y/Δ/▲/N



GQ8G-D/Y/Δ/▲/S



GQ8G-D/Y/Δ/▲/A



- ◎ 灯珠颜色 (Δ): **R G Y B W**
- ◎ 电压等级 (▲): 6V, 12V, 24V, 110V(外接电阻), 220V(外接电阻)

- ◎ 安装孔尺寸: $\Phi 8\text{mm}$
- ◎ 灯珠类型: 双向LED灯珠(交直流通用)
- ◎ 额定电流: 2mA ~ 20mA
- ◎ 螺母扭矩: 约0.2N·m
- ◎ 面板厚度: 不大于6mm
- ◎ 尾部配置: 接线插片(2.8×0.8mm) / 长约15cm导线
- ◎ 耐焊锡热: 320°C 3秒

- ◎ 外壳材料: 黄铜镀镍 / 黄铜镀黑 / 不锈钢
- ◎ 灯罩材料: 环氧树脂(可定制抗紫外线)
- ◎ 基座材料: PA
- ◎ 防护等级: IP67, IK06(仅平圆形)
- ◎ **RoHS** 可定制

- ◎ Lamp bead color (Δ): **R G Y B W**
- ◎ Voltage level (▲): 6V, 12V, 24V, 110V (external resistor), 220V (external resistor)

- ◎ Installation hole size: $\Phi 8\text{mm}$
- ◎ Lamp bead type: Bidirectional LED lamp bead (AC/DC universal)
- ◎ Rated current: 2mA~20mA
- ◎ Nut torque: approximately 0.2N·m
- ◎ Panel thickness: not exceeding 6mm
- ◎ Tail configuration: Wiring plug (2.8 × 0.8mm) / approximately 15cm long wire
- ◎ Solder heat resistance: 320 °C for 3 seconds

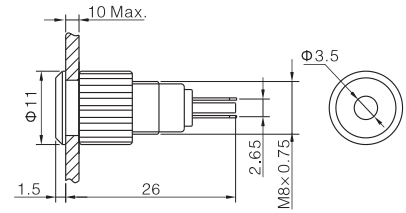
- ◎ Shell material: Nickel plated brass / Black plated brass / Stainless steel
- ◎ Lampshade material: Epoxy resin (customizable UV resistant)
- ◎ Base material: PA
- ◎ Protection level: IP67, IK06 (flat circular only)
- ◎ **RoHS** customizable

GQ8信号灯相关参数

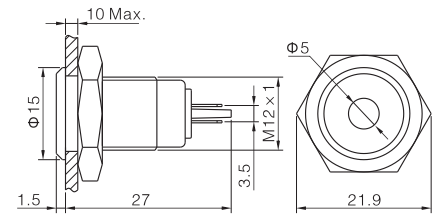
GQ8 signal light related parameters



GQ8F-D/Δ/▲/N



GQ12F-D/Δ/▲/N



- ◎ 灯珠颜色 (△): R G Y B W
- ◎ 电压等级 (▲): 6V, 12V, 24V

- ◎ 安装孔尺寸: Φ8, 12mm
- ◎ 灯珠类型: 双向LED灯珠(交直流通用)
- ◎ 额定电流: 2mA~20mA
- ◎ 螺母扭矩: 约0.3N·m
- ◎ 面板厚度: 不大于10mm
- ◎ 尾部配置: 接线插件(2.8×0.5mm)
- ◎ 耐焊锡热: 320℃ 3秒

- ◎ 外壳材料: 黄铜镀镍
- ◎ 灯罩材料: 聚碳酸酯
- ◎ 底座材料: PBT
- ◎ 防护等级: IP67, IK06(仅平圆形)
- ◎ RoHS 可定制

- ◎ Lamp bead color (△): R G Y B W
- ◎ Voltage level (▲): 6V, 12V, 24V

- ◎ Installation hole size: Φ8, 12mm
- ◎ Lamp bead type: Bidirectional LED lamp bead (AC/DC universal)
- ◎ Rated current: 2mA~20mA
- ◎ Nut torque: approximately 0.3N·m
- ◎ Panel thickness: not exceeding 10mm
- ◎ Tail configuration: Wiring plug (2.8 × 0.8mm)
- ◎ Solder heat resistance: 320 °C for 3 seconds

- ◎ Shell material: Nickel plated brass
- ◎ Lampshade material: PC
- ◎ Base material: PBT
- ◎ Protection level: IP67, IK06 (flat circular only)
- ◎ RoHS customizable

GQ8,12信号灯相关参数

GQ8, 12 signal light related parameters



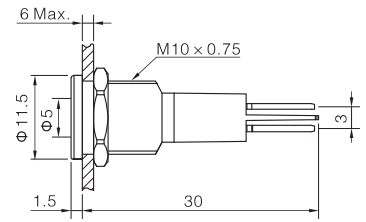
GQ10T-D/Δ/▲/N



GQ10T-D/Δ/▲/S



GQ10T-D/Δ/▲/A



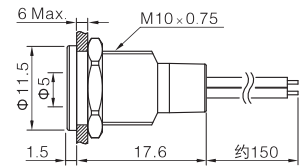
GQ10T-D/Y/Δ/▲/N



GQ10T-D/Y/Δ/▲/S



GQ10T-D/Y/Δ/▲/A



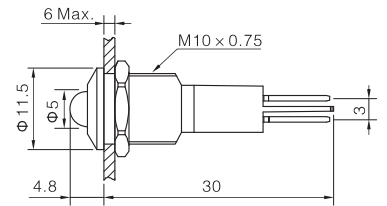
GQ10G-D/Δ/▲/N



GQ10G-D/Δ/▲/S



GQ10G-D/Δ/▲/A



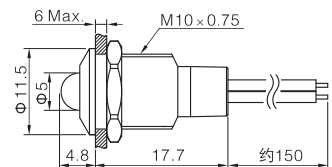
GQ10G-D/Y/Δ/▲/N



GQ10G-D/Y/Δ/▲/S



GQ10G-D/Y/Δ/▲/A



- ◎ 灯珠颜色 (Δ) : **R** **G** **Y** **B** **W**
- ◎ 电压等级 (▲) : 6V, 12V, 24V, 110V (外接电阻), 220V (外接电阻)

- ◎ 安装孔尺寸: Φ10mm
- ◎ 灯珠类型: 双向LED灯珠(交直流通用)
- ◎ 额定电流: 2mA~20mA
- ◎ 螺母扭矩: 约0.3N·m
- ◎ 面板厚度: 不大于6mm
- ◎ 尾部配置: 接线插片(2.8×0.8mm)/长约15cm导线
- ◎ 耐焊锡热: 320℃ 3秒

- ◎ 外壳材料: 黄铜镀镍/黄铜镀黑/不锈钢
- ◎ 灯罩材料: 环氧树脂(可定制抗紫外线)
- ◎ 基座材料: PA
- ◎ 防护等级: IP67, IK06(仅平圆形)
- ◎ **RoHS** 可定制

- ◎ Lamp bead color (Δ) : **R** **G** **Y** **B** **W**
- ◎ Voltage level (▲) : 6V, 12V, 24V, 110V (external resistor), 220V (external resistor)

- ◎ Installation hole size: Φ10mm
- ◎ Lamp bead type: Bidirectional LED lamp bead (AC/DC universal)
- ◎ Rated current: 2mA~20mA
- ◎ Nut torque: approximately 0.3N·m
- ◎ Panel thickness: not exceeding 6mm
- ◎ Tail configuration: Wiring plug (2.8 × 0.8mm) / approximately 15cm long wire
- ◎ Solder heat resistance: 320 °C for 3 seconds

- ◎ Shell material: Nickel plated brass / Black plated brass / Stainless steel
- ◎ Lampshade material: Epoxy resin (customizable UV resistant)
- ◎ Base material: PA
- ◎ Protection level: IP67, IK06 (flat circular only)
- ◎ **RoHS** customizable

GQ10信号灯相关参数

GQ10 signal light related parameters



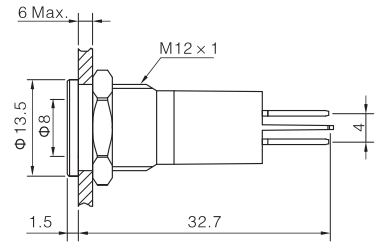
GQ12T-D/Δ/▲/N



GQ12T-D/Δ/▲/S



GQ12T-D/Δ/▲/A



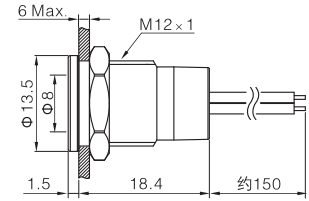
GQ12T-D/Y/Δ/▲/N



GQ12T-D/Y/Δ/▲/S



GQ12T-D/Y/Δ/▲/A



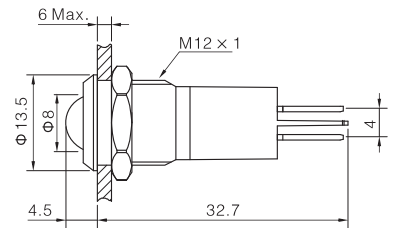
GQ12G-D/Δ/▲/N



GQ12G-D/Δ/▲/S



GQ12G-D/Δ/▲/A



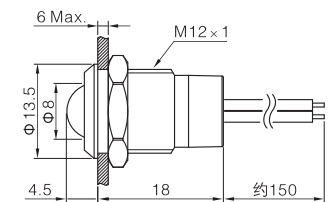
GQ12G-D/Y/Δ/▲/N



GQ12G-D/Y/Δ/▲/S



GQ12G-D/Y/Δ/▲/A



- ◎ 灯珠颜色 (Δ): **R G Y B W**
- ◎ 电压等级 (▲): 6V, 12V, 24V, 110V, 220V

- ◎ 安装孔尺寸: Φ12mm
- ◎ 灯珠类型: 双向LED灯珠(交直流通用)
- ◎ 额定电流: 2mA~20mA
- ◎ 螺母扭矩: 约0.3N·m
- ◎ 面板厚度: 不大于6mm
- ◎ 尾部配置: 接线插片(2.8×0.8mm)/长约15cm导线
- ◎ 耐焊锡热: 320℃ 3秒

- ◎ 外壳材料: 黄铜镀镍/不锈钢/黄铜镀黑
- ◎ 灯罩材料: 环氧树脂(可定制抗紫外线)
- ◎ 底座材料: PA
- ◎ 防护等级: IP67, IK06(仅平圆形)
- ◎ **RoHS** 可定制

- ◎ Lamp bead color (Δ): **R G Y B W**
- ◎ Voltage level (▲): 6V, 12V, 24V, 110V, 220V

- ◎ Installation hole size: Φ12mm
- ◎ Lamp bead type: Bidirectional LED lamp bead (AC/DC universal)
- ◎ Rated current: 2mA~20mA
- ◎ Nut torque: approximately 0.3N·m
- ◎ Panel thickness: not exceeding 6mm
- ◎ Tail configuration: Wiring plug (2.8 × 0.8mm) / approximately 15cm long wire
- ◎ Solder heat resistance: 320 °C for 3 seconds

- ◎ Shell material: Nickel plated brass / Black plated brass / Stainless steel
- ◎ Lampshade material: Epoxy resin (customizable UV resistant)
- ◎ Base material: PA
- ◎ Protection level: IP67, IK06 (flat circular only)
- ◎ **RoHS** customizable

GQ12信号灯相关参数

GQ12 signal light related parameters



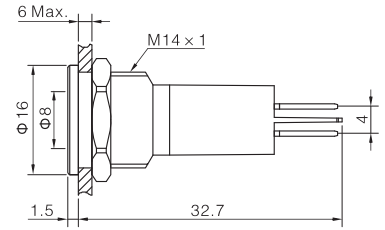
GQ14T-D/Δ/▲/N



GQ14T-D/Δ/▲/S



GQ14T-D/Δ/▲/A



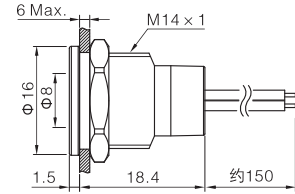
GQ14T-D/Y/Δ/▲/N



GQ14T-D/Y/Δ/▲/S



GQ14T-D/Y/Δ/▲/A



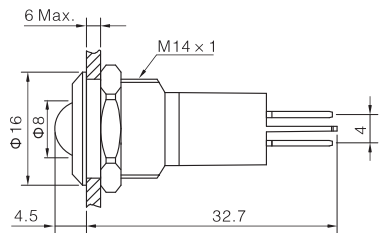
GQ14G-D/Δ/▲/N



GQ14G-D/Δ/▲/S



GQ14G-D/Δ/▲/A



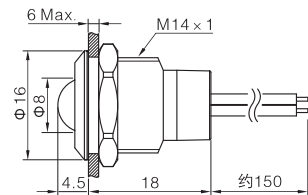
GQ14G-D/Y/Δ/▲/N



GQ14G-D/Y/Δ/▲/S



GQ14G-D/Y/Δ/▲/A



- ◎ 灯珠颜色 (Δ): **R G Y B W**
- ◎ 电压等级 (▲): 6V, 12V, 24V

- ◎ 安装孔尺寸: Φ14mm
- ◎ 灯珠类型: 双向LED灯珠(交直流通用)
- ◎ 额定电流: 2mA~20mA
- ◎ 螺母扭矩: 约0.6N·m
- ◎ 面板厚度: 1~6mm
- ◎ 尾部配置: 接线插片(2.8×0.8mm)/长约15cm导线
- ◎ 耐焊锡热: 320°C 3秒

- ◎ 外壳材料: 黄铜镀镍/不锈钢/黄铜镀黑
- ◎ 灯罩材料: 环氧树脂(可定制抗紫外线)
- ◎ 底座材料: PA
- ◎ 防护等级: IP67, IK06(仅平圆形)
- ◎ **RoHS** 可定制

- ◎ Lamp bead color (Δ): **R G Y B W**
- ◎ Voltage level (▲): 6V, 12V, 24V, 110V, 220V

- ◎ Installation hole size: Φ14mm
- ◎ Lamp bead type: Bidirectional LED lamp bead (AC/DC universal)
- ◎ Rated current: 2mA~20mA
- ◎ Nut torque: approximately 0.6N·m
- ◎ Panel thickness: 1~6mm
- ◎ Tail configuration: Wiring plug (2.8 × 0.8mm) / approximately 15cm long wire
- ◎ Solder heat resistance: 320 °C for 3 seconds

- ◎ Shell material: Nickel plated brass / Black plated brass / Stainless steel
- ◎ Lampshade material: Epoxy resin (customizable UV resistant)
- ◎ Base material: PA
- ◎ Protection level: IP67, IK06 (flat circular only)
- ◎ **RoHS** customizable

GQ14信号灯相关参数

GQ14 signal light related parameters



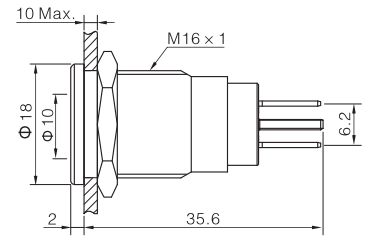
GQ16T-D/Δ/▲/N



GQ16T-D/Δ/▲/S



GQ16T-D/Δ/▲/A



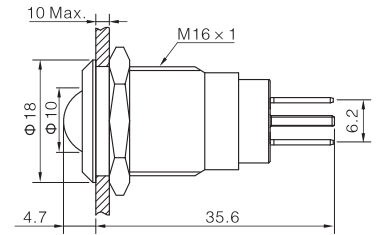
GQ16G-D/Δ/▲/N



GQ16G-D/Δ/▲/S



GQ16G-D/Δ/▲/A



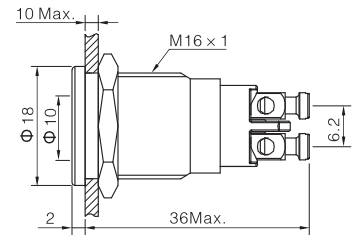
GQ16T-D/L/Δ/▲/N



GQ16T-D/L/Δ/▲/S



GQ16T-D/L/Δ/▲/A



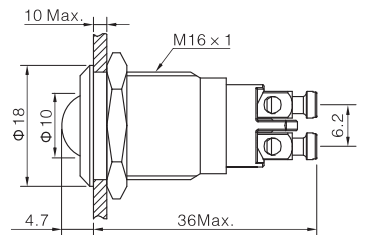
GQ16G-D/L/Δ/▲/N



GQ16G-D/L/Δ/▲/S



GQ16G-D/L/Δ/▲/A



- ◎ 灯珠颜色 (Δ): **R G Y B W**
- ◎ 电压等级 (▲): 6V, 12V, 24V, 110V, 220V

- ◎ 安装孔尺寸: Φ16mm
- ◎ 灯珠类型: 双向LED灯珠(交直流通用)
- ◎ 额定电流: 2mA~20mA
- ◎ 紧固力矩: 约0.6N·m(螺母) 0.4N·m(螺丝)
- ◎ 面板厚度: 不大于10mm
- ◎ 尾部配置: 接线插片(2.8×0.8mm)/接线柱
- ◎ 耐焊锡热: 320℃ 3秒

- ◎ 外壳材料: 黄铜镀镍/不锈钢/黄铜镀黑
- ◎ 灯罩材料: 聚碳酸酯(可定制抗紫外线)
- ◎ 基座材料: PA
- ◎ 防护等级: IP67, IK06(仅平圆形)
- ◎ **RoHS** 可定制

- ◎ Lamp bead color (Δ): **R G Y B W**
- ◎ Voltage level (▲): 6V, 12V, 24V, 110V, 220V

- ◎ Installation hole size: Φ16mm
- ◎ Lamp bead type: Bidirectional LED lamp bead (AC/DC universal)
- ◎ Rated current: 2mA~20mA
- ◎ Nut torque: About 0.6N·m (nut) 0.4N·m (screw)
- ◎ Panel thickness: not exceeding 10mm
- ◎ Tail configuration: Wiring plug (2.8 × 0.8mm) / terminal
- ◎ Solder heat resistance: 320 °C for 3 seconds

- ◎ Shell material: Nickel plated brass / Black plated brass / Stainless steel
- ◎ Lampshade material: Epoxy resin (customizable UV resistant)
- ◎ Base material: PA
- ◎ Protection level: IP67, IK06 (flat circular only)
- ◎ **RoHS** customizable

GQ16信号灯相关参数

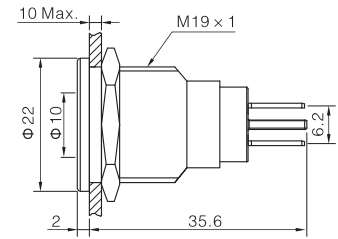
GQ16 signal light related parameters



GQ19T-D / / S



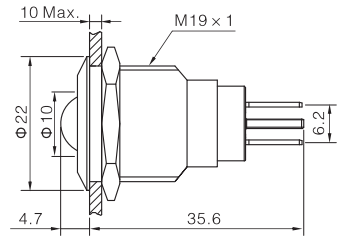
GQ19T-D/Δ/▲/A



GQ19G-D / / S



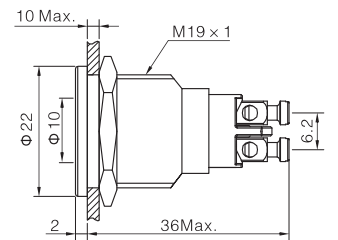
GQ19G-D/Δ/▲/A



GQ19T-D/L / / S



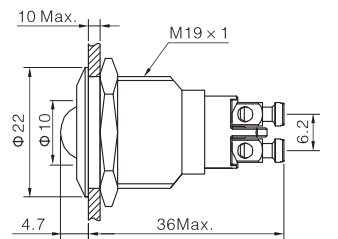
GQ19T-D/L/Δ/▲/A



GQ19G-D/L / / S



GQ19G-D/L/Δ/▲/A



- ◎ 灯珠颜色 (Δ): **R G Y B W**
- ◎ 电压等级 (▲): 6V, 12V, 24V, 110V, 220V

- ◎ 安装孔尺寸: Φ19mm
- ◎ 灯珠类型: 双向LED灯珠(交直流通用)
- ◎ 额定电流: 2mA~20mA
- ◎ 紧固力矩: 约0.8N·m(螺母) 0.4N·m(螺丝)
- ◎ 面板厚度: 不大于10mm
- ◎ 尾部配置: 接线插片(2.8×0.8mm)/ 接线柱
- ◎ 耐焊锡热: 320℃ 3秒

- ◎ 外壳材料: 不锈钢/黄铜镀黑
- ◎ 灯罩材料: 聚碳酸酯(可定制抗紫外线)
- ◎ 基座材料: PA
- ◎ 防护等级: IP67, IK06(仅平圆形)
- ◎ **RoHS** 可定制

- ◎ Lamp bead color (Δ): **R G Y B W**
- ◎ Voltage level (▲): 6V, 12V, 24V, 110V, 220V

- ◎ Installation hole size: Φ19mm
- ◎ Lamp bead type: Bidirectional LED lamp bead (AC/DC universal)
- ◎ Rated current: 2mA~20mA
- ◎ Nut torque: About 0.8N·m (nut) 0.4N·m (screw)
- ◎ Panel thickness: not exceeding 10mm
- ◎ Tail configuration: Wiring plug (2.8 × 0.8mm) / terminal
- ◎ Solder heat resistance: 320 °C for 3 seconds

- ◎ Shell material: Black plated brass / Stainless steel
- ◎ Lampshade material: Epoxy resin (customizable UV resistant)
- ◎ Base material: PA
- ◎ Protection level: IP67, IK06 (flat circular only)
- ◎ **RoHS** customizable

GQ19信号灯相关参数

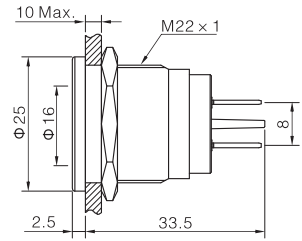
GQ19 signal light related parameters



GQ22T-D/ / S



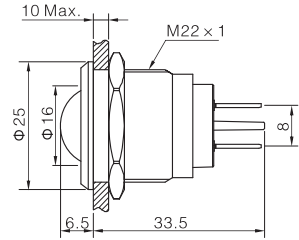
GQ22T-D/Δ/▲/A



GQ22G-D/ / S



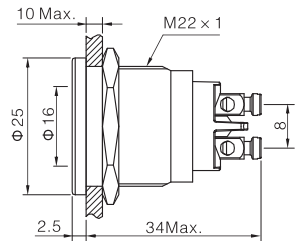
GQ22G-D/Δ/▲/A



GQ22T-D/L/ / S



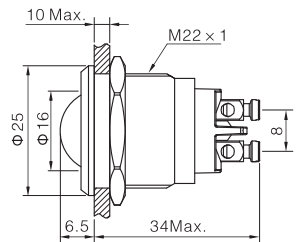
GQ22T-D/L/Δ/▲/A



GQ22G-D/L/ / S



GQ22G-D/L/Δ/▲/A



- ◎ 灯珠颜色 (Δ): **R G Y B W**
- ◎ 电压等级 (▲): 6V, 12V, 24V, 110V, 220V

- ◎ 安装孔尺寸: Φ22mm
- ◎ 灯珠类型: 双向LED灯珠(交直流通用)
- ◎ 额定电流: 2mA~20mA
- ◎ 紧固力矩: 约1N·m(螺母) 0.4N·m(螺丝)
- ◎ 面板厚度: 不大于10mm
- ◎ 尾部配置: 接线插片(2.8×0.8mm)/接线柱
- ◎ 耐焊锡热: 320℃ 3秒

- ◎ 外壳材料: 不锈钢/黄铜镀黑
- ◎ 灯罩材料: 聚碳酸酯(可定制抗紫外线)
- ◎ 基座材料: PA
- ◎ 防护等级: IP67, IK06(仅平圆形)
- ◎ **RoHS** 可定制

- ◎ Lamp bead color (Δ): **R G Y B W**
- ◎ Voltage level (▲): 6V, 12V, 24V, 110V, 220V

- ◎ Installation hole size: Φ22mm
- ◎ Lamp bead type: Bidirectional LED lamp bead (AC/DC universal)
- ◎ Rated current: 2mA~20mA
- ◎ Nut torque: About 1N·m (nut) 0.4N·m (screw)
- ◎ Panel thickness: not exceeding 10mm
- ◎ Tail configuration: Wiring plug (2.8 × 0.8mm) / terminal
- ◎ Solder heat resistance: 320 °C for 3 seconds

- ◎ Shell material: Black plated brass / Stainless steel
- ◎ Lampshade material: Epoxy resin (customizable UV resistant)
- ◎ Base material: PA
- ◎ Protection level: IP67, IK06 (flat circular only)
- ◎ **RoHS** customizable

GQ22信号灯相关参数

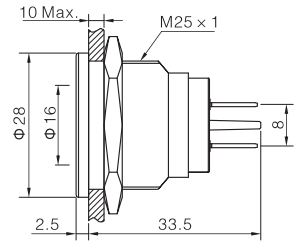
GQ22 signal light related parameters



GQ25T-D / / S



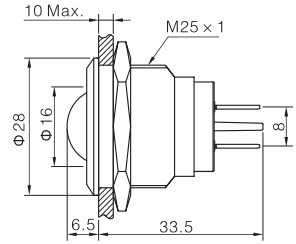
GQ25T-D/Δ/▲/A



GQ25G-D / / S



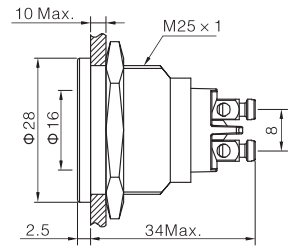
GQ25G-D/Δ/▲/A



GQ25T-D/L / / S



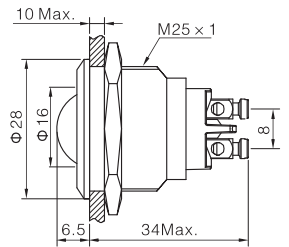
GQ25T-D/L/Δ/▲/A



GQ25G-D/L / / S



GQ25G-D/L/Δ/▲/A



- ◎ 灯珠颜色 (Δ) : **R G Y B W**
- ◎ 电压等级 (▲) : 6V, 12V, 24V, 110V, 220V

- ◎ 安装孔尺寸: Φ25mm
- ◎ 灯珠类型: 双向LED灯珠(交直流通用)
- ◎ 额定电流: 2mA~20mA
- ◎ 紧固力矩: 约1.2N·m(螺母) 0.4N·m(螺丝)
- ◎ 面板厚度: 不大于10mm
- ◎ 尾部配置: 接线插片(2.8×0.8mm)/ 接线柱
- ◎ 耐焊锡热: 320℃ 3秒

- ◎ 外壳材料: 不锈钢/黄铜镀黑
- ◎ 灯罩材料: 聚碳酸酯(可定制抗紫外线)
- ◎ 基座材料: PA
- ◎ 防护等级: IP67, IK06(仅平圆形)
- ◎ **RoHS** 可定制

- ◎ Lamp bead color (Δ) : **R G Y B W**
- ◎ Voltage level (▲) : 6V, 12V, 24V, 110V, 220V

- ◎ Installation hole size: Φ25mm
- ◎ Lamp bead type: Bidirectional LED lamp bead (AC/DC universal)
- ◎ Rated current: 2mA~20mA
- ◎ Nut torque: About 1.2N·m (nut) 0.4N·m (screw)
- ◎ Panel thickness: not exceeding 10mm
- ◎ Tail configuration: Wiring plug (2.8 × 0.8mm) / terminal
- ◎ Solder heat resistance: 320 °C for 3 seconds

- ◎ Shell material: Black plated brass / Stainless steel
- ◎ Lampshade material: Epoxy resin (customizable UV resistant)
- ◎ Base material: PA
- ◎ Protection level: IP67, IK06 (flat circular only)
- ◎ **RoHS** customizable

GQ25信号灯相关参数

GQ25 signal light related parameters

GQ8T-D/Y/★RGB/▲/◎ (可生产三引线双色灯) (Can produce three lead dual color lamps)



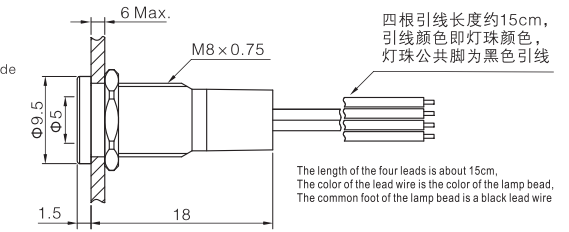
Φ8平圆形三色灯
Φ 8 flat circular three color lamp

带灯结构★ Lamp structure 41: 三色共阴 42: 三色共阳
41: Three color common cathode 42: Three color common anode

带灯颜色 Color with light **R G B**

带灯电压▲ Lamp voltage DC 6V / 12V / 24V

外壳材料◎ Shell Material N: 黄铜镀镍外壳 / S: 不锈钢外壳 / A: 黄铜镀黑外壳
N: Brass nickel plated shell / S: stainless steel shell / A: brass black plated shell



GQ8G-D/Y/★RGB/▲/◎ (可生产三引线双色灯) (Can produce three lead dual color lamps)



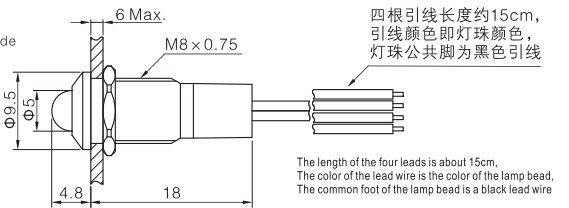
Φ8球形三色灯
Φ 8 spherical tri color lamp

带灯结构★ Lamp structure 41: 三色共阴 42: 三色共阳
41: Three color common cathode 42: Three color common anode

带灯颜色 Color with light **R G B**

带灯电压▲ Lamp voltage DC 6V / 12V / 24V

外壳材料◎ Shell Material N: 黄铜镀镍外壳 / S: 不锈钢外壳 / A: 黄铜镀黑外壳
N: Brass nickel plated shell / S: stainless steel shell / A: brass black plated shell



GQ10T-D/Y/★RGB/▲/◎ (可生产三引线双色灯) (Can produce three lead dual color lamps)



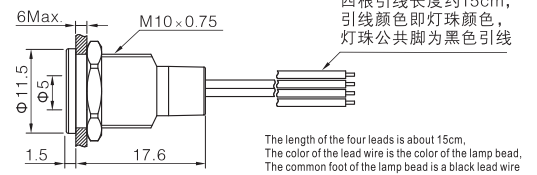
Φ10平圆形三色灯
Φ 10 flat circular three color lamp

带灯结构★ Lamp structure 41: 三色共阴 42: 三色共阳
41: Three color common cathode 42: Three color common anode

带灯颜色 Color with light **R G B**

带灯电压▲ Lamp voltage DC 6V / 12V / 24V

外壳材料◎ Shell Material N: 黄铜镀镍外壳 / S: 不锈钢外壳 / A: 黄铜镀黑外壳
N: Brass nickel plated shell / S: stainless steel shell / A: brass black plated shell



GQ10G-D/Y/★RGB/▲/◎ (可生产三引线双色灯) (Can produce three lead dual color lamps)



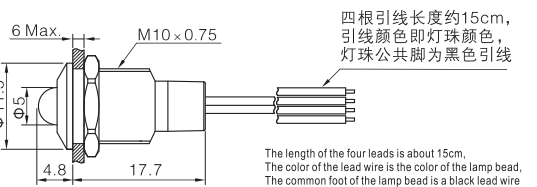
Φ10球形三色灯
Φ 10 spherical tri color lamp

带灯结构★ Lamp structure 41: 三色共阴 42: 三色共阳
41: Three color common cathode 42: Three color common anode

带灯颜色 Color with light **R G B**

带灯电压▲ Lamp voltage DC 6V / 12V / 24V

外壳材料◎ Shell Material N: 黄铜镀镍外壳 / S: 不锈钢外壳 / A: 黄铜镀黑外壳
N: Brass nickel plated shell / S: stainless steel shell / A: brass black plated shell



GQ12T-D/Y/★RGB/▲/◎ (可生产三引线双色灯) (Can produce three lead dual color lamps)



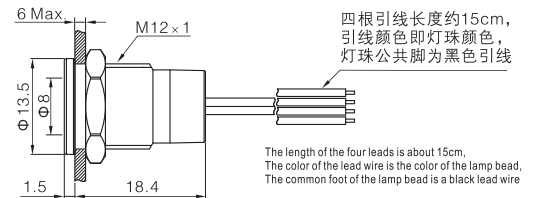
Φ12平圆形三色灯
Φ 12 flat circular three color lamp

带灯结构★ Lamp structure 41: 三色共阴 42: 三色共阳
41: Three color common cathode 42: Three color common anode

带灯颜色 Color with light **R G B**

带灯电压▲ Lamp voltage DC 6V / 12V / 24V

外壳材料◎ Shell Material N: 黄铜镀镍外壳 / S: 不锈钢外壳 / A: 黄铜镀黑外壳
N: Brass nickel plated shell / S: stainless steel shell / A: brass black plated shell



GQ12G-D/Y/★RGB/▲/◎ (可生产三引线双色灯) (Can produce three lead dual color lamps)



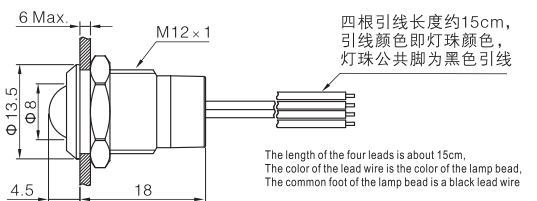
Φ12球形三色灯
Φ 12 spherical tri color lamp

带灯结构★ Lamp structure 41: 三色共阴 42: 三色共阳
41: Three color common cathode 42: Three color common anode

带灯颜色 Color with light **R G B**

带灯电压▲ Lamp voltage DC 6V / 12V / 24V

外壳材料◎ Shell Material N: 黄铜镀镍外壳 / S: 不锈钢外壳 / A: 黄铜镀黑外壳
N: Brass nickel plated shell / S: stainless steel shell / A: brass black plated shell



GQ14T-D/Y/★RGB/▲/◎ (可生产三引线双色灯) (Can produce three lead dual color lamps)

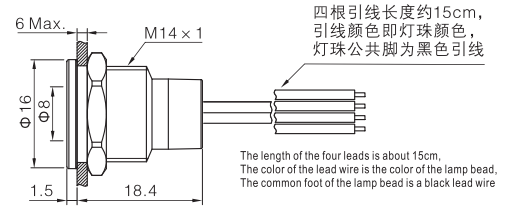


带灯结构★ Lamp structure 41: 三色共阴 42: 三色共阳
41: Three color common cathode 42: Three color common anode

带灯颜色 Color with light **R G B**

带灯电压▲ Lamp voltage DC 6V / 12V / 24V

外壳材料◎ Shell Material N: 黄铜镀镍外壳 / S: 不锈钢外壳 / A: 黄铜镀黑外壳
N: Brass nickel plated shell / S: stainless steel shell / A: brass black plated shell



GQ14G-D/Y/★RGB/▲/◎ (可生产三引线双色灯) (Can produce three lead dual color lamps)

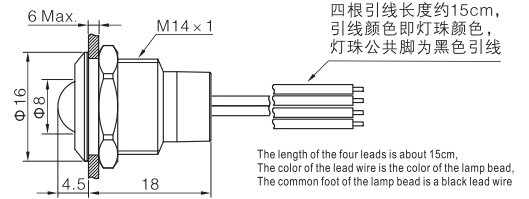


带灯结构★ Lamp structure 41: 三色共阴 42: 三色共阳
41: Three color common cathode 42: Three color common anode

带灯颜色 Color with light **R G B**

带灯电压▲ Lamp voltage DC 6V / 12V / 24V

外壳材料◎ Shell Material N: 黄铜镀镍外壳 / S: 不锈钢外壳 / A: 黄铜镀黑外壳
N: Brass nickel plated shell / S: stainless steel shell / A: brass black plated shell



GQ16T-D/Y/★RGB/▲/◎ (可生产三引线双色灯) (Can produce three lead dual color lamps)

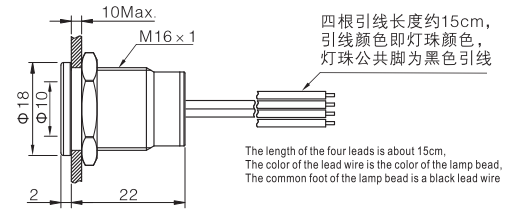


带灯结构★ Lamp structure 41: 三色共阴 42: 三色共阳
41: Three color common cathode 42: Three color common anode

带灯颜色 Color with light **R G B**

带灯电压▲ Lamp voltage DC 6V / 12V / 24V

外壳材料◎ Shell Material N: 黄铜镀镍外壳 / S: 不锈钢外壳 / A: 黄铜镀黑外壳
N: Brass nickel plated shell / S: stainless steel shell / A: brass black plated shell



GQ16G-D/Y/★RGB/▲/◎ (可生产三引线双色灯) (Can produce three lead dual color lamps)

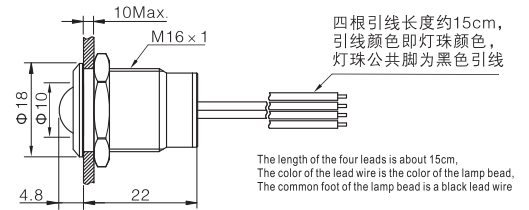


带灯结构★ Lamp structure 41: 三色共阴 42: 三色共阳
41: Three color common cathode 42: Three color common anode

带灯颜色 Color with light **R G B**

带灯电压▲ Lamp voltage DC 6V / 12V / 24V

外壳材料◎ Shell Material N: 黄铜镀镍外壳 / S: 不锈钢外壳 / A: 黄铜镀黑外壳
N: Brass nickel plated shell / S: stainless steel shell / A: brass black plated shell



GQ19T-D/Y/★RGB/▲/◎ (可生产三引线双色灯) (Can produce three lead dual color lamps)

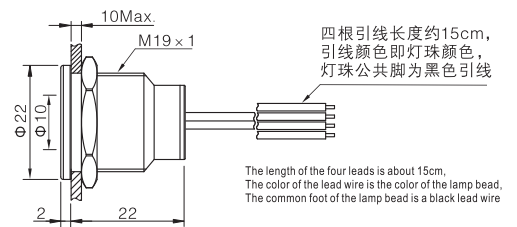


带灯结构★ Lamp structure 41: 三色共阴 42: 三色共阳
41: Three color common cathode 42: Three color common anode

带灯颜色 Color with light **R G B**

带灯电压▲ Lamp voltage DC 6V / 12V / 24V

外壳材料◎ Shell Material S: 不锈钢外壳 / A: 黄铜镀黑外壳
S: stainless steel shell / A: brass black plated shell



GQ19G-D/Y/★RGB/▲/◎ (可生产三引线双色灯) (Can produce three lead dual color lamps)

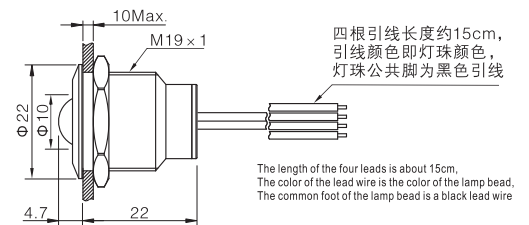


带灯结构★ Lamp structure 41: 三色共阴 42: 三色共阳
41: Three color common cathode 42: Three color common anode

带灯颜色 Color with light **R G B**

带灯电压▲ Lamp voltage DC 6V / 12V / 24V

外壳材料◎ Shell Material S: 不锈钢外壳 / A: 黄铜镀黑外壳
S: stainless steel shell / A: brass black plated shell



GQ22T-D/Y/★RGB/▲/◎ (可生产三引线双色灯) (Can produce three lead dual color lamps)

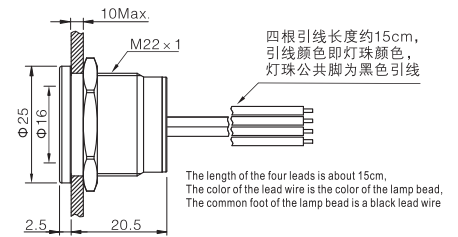


带灯结构★ Lamp structure 41: 三色共阴 42: 三色共阳
41: Three color common cathode 42: Three color common anode

带灯颜色 Color with light **R G B**

带灯电压▲ Lamp voltage DC 6V / 12V / 24V

外壳材料◎ Shell Material S: 不锈钢外壳 / A: 黄铜镀黑外壳
S: stainless steel shell / A: brass black plated shell



GQ22G-D/Y/★RGB/▲/◎ (可生产三引线双色灯) (Can produce three lead dual color lamps)

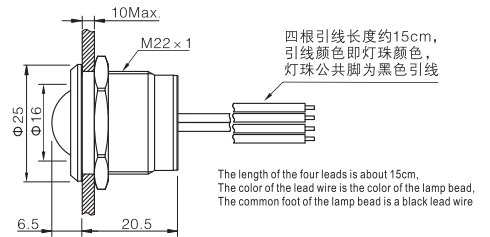


带灯结构★ Lamp structure 41: 三色共阴 42: 三色共阳
41: Three color common cathode 42: Three color common anode

带灯颜色 Color with light **R G B**

带灯电压▲ Lamp voltage DC 6V / 12V / 24V

外壳材料◎ Shell Material S: 不锈钢外壳 / A: 黄铜镀黑外壳
S: stainless steel shell / A: brass black plated shell



GQ25T-D/Y/★RGB/▲/◎ (可生产三引线双色灯) (Can produce three lead dual color lamps)

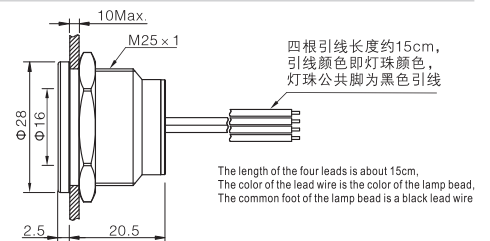


带灯结构★ Lamp structure 41: 三色共阴 42: 三色共阳
41: Three color common cathode 42: Three color common anode

带灯颜色 Color with light **R G B**

带灯电压▲ Lamp voltage DC 6V / 12V / 24V

外壳材料◎ Shell Material S: 不锈钢外壳 / A: 黄铜镀黑外壳
S: stainless steel shell / A: brass black plated shell



GQ25G-D/Y/★RGB/▲/◎ (可生产三引线双色灯) (Can produce three lead dual color lamps)



带灯结构★ Lamp structure 41: 三色共阴 42: 三色共阳
41: Three color common cathode 42: Three color common anode

带灯颜色 Color with light **R G B**

带灯电压▲ Lamp voltage DC 6V / 12V / 24V

外壳材料◎ Shell Material S: 不锈钢外壳 / A: 黄铜镀黑外壳
S: stainless steel shell / A: brass black plated shell

